

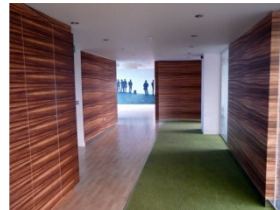
## **NEW TASMAC CAMPUS OPENS IN WEMBLEY**

**Joining TASMAC London School of Business in 2010 is even more exciting! This multi-campus Business School now welcomes students in BRAND NEW Wembley Campus**

Over five floors of high class modern space, with large classrooms, student facilities, and IT infrastructure students will have a great experience during their studies.

The Wembley Campus is larger than the Kingsbury Campus as TASMAC student numbers have grown over the last year and we will continue to see more and more students with every new semester.

The Wembley Campus is easily accessible by tube - Wembley Central and bus. It is only 20 minutes away from Central London.



If you would like to know more about our Programmes please visit our [website](#).



### **The High Street**

The high street is bustling with student life, international restaurants and cuisine, coffee shops and sports facilities.

The vicinity of the Wembley Stadium and other Olympics sites provide a lot of employment opportunities for the students and a good living environment with many safe residential areas surrounding the campus. It is a prime location with

easy, 20 minute access to the heart of central London, through a network of Underground and Overground trains and busses.



This is really exciting news and we are all looking forward to moving into the new neighbourhood!